

Woods Fairy Clothespin Ornament

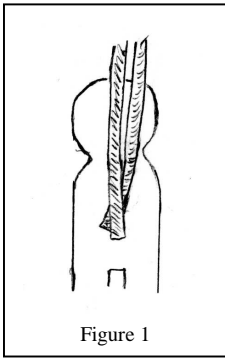


Figure 1

- 1) Paint the entire clothespin flesh color and let it dry.
- 2) Using pattern 1 from the patterns page, cut the wings from the gold mesh.
- 3) Cut a piece of brown chenille stem 5 inches long. Bend it in half first, then bend it into the shape of the top of the wings as seen in pattern 1.
- 4) Use a thin line of glue along the entire length of the chenille stem and glue it to the top of the wings.
- 5) Cut a piece of 1/8 inch brown hanging ribbon 12 inches long. Glue the ends on the back of the clothespin just below the neck. See figure 1.
- 6) Use pattern 2 from the patterns sheet to cut a vest from the brown felt. Cut a rectangle 2 1/4 inches by 1 inch and cut the top two corners off.
- 7) Glue 5 feathers along the vest as seen in figure 2. Let it dry.

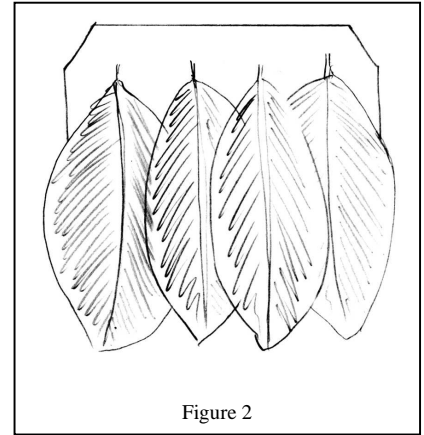


Figure 2

- 8) Cut two pieces of brown felt one and a half inches by one half inch and glue them around the bottom of each leg for boots. Use pattern 5 from the patterns sheet.
- 9) Cut the hat from the brown felt using pattern 4 from the patterns page. Cut a rectangle 1 3/4 inches by 3/4 inches, then round it off into a half circle. See figure 4.



Figure 4

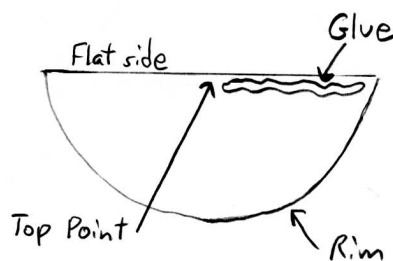


Figure 5

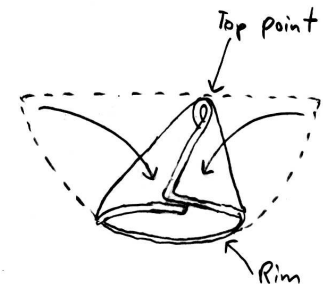


Figure 6

- 10) Place glue along one side of the flat part (see figure 5). Next, fold the corners over to form a cone shape.

The glued part of the flat side should be touching the unglued part of the flat side (See figure 6). Note that the rounded part becomes the rim of the hat. The flat side becomes the back of the hat. The center of the flat side becomes the top point of the hat. See figures 5 and 6. You may have to hold it in place until it dries.

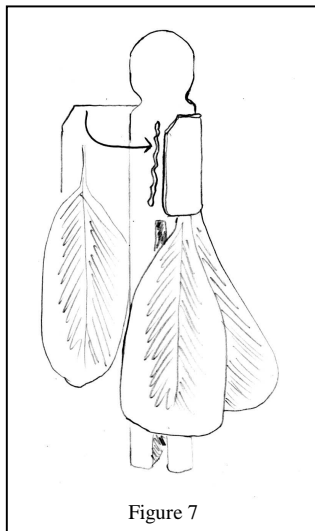


Figure 7

- 11) Place glue all the way around the body-part of the clothespin and in the front as seen in figure 7. Wrap the vest and feathers around the body. Make sure that the side of the vest with the feathers glued to it is against the clothespin so the feathers become glued under the vest, not on the outside. Hold it in the front until it dries. You may want to use wax paper to hold the felt so it will not stick to your fingers. Let it dry.

- 12) Cut a piece of brown chenille stem 4 inches long and bend the ends over to form hands as seen in figure 8.

- 13) Bend the chenille stem around the back of the Fairy so the arms are facing straight out in front. See figure 8.

- 14) Place glue on the back of the clothespin between the shoulders, just below the neck and glue the arms in place.

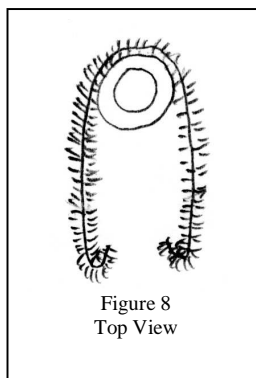


Figure 8
Top View

- 15) Roll the brown doll hair up into a tight ball in the palm of your hand. It may be easier if you get your palm wet first. Pull the ball

of hair into a pancake shape about the size of a quarter. Cover the top and back of the head with glue and hold the hair in place until it dries enough to hold then let it sit to dry all the way.

See figure 9.

- 16) Glue the hat onto the top of the head. Be sure to hold it in place so it glues itself down onto the head and is not held in the air by the hair. You'll have to be generous with the glue and hold it tightly against the head until it dries enough to stay put.

- 17) Glue the wings to the back of the Fairy. The brown chenille stem should be in the front. Glue the tip of the "v" just under the arms on the back of the Fairy.

- 18) Tie a piece of tan string around the waist. Glue a feather into the hole on the top of the hat. Glue two green seed beads to the front of the vest for buttons, glue on the eyes and draw a mouth with a fine felt tip pen. See figure 9.



Figure 9